



4 The Bowl 69 Cornish Place, Sheffield S6 3AF £1,000 Per Calendar Month

A seamless blend of modern luxury and industrial heritage, this spectacular Grade II listed one bedroom, one bathroom apartment is set within an exclusive private development in the heart of Kelham Island. Boasting on site parking, a residents' gym, and access to the area's award winning bars, restaurants, and cafés, this unique home offers character, convenience, and community.

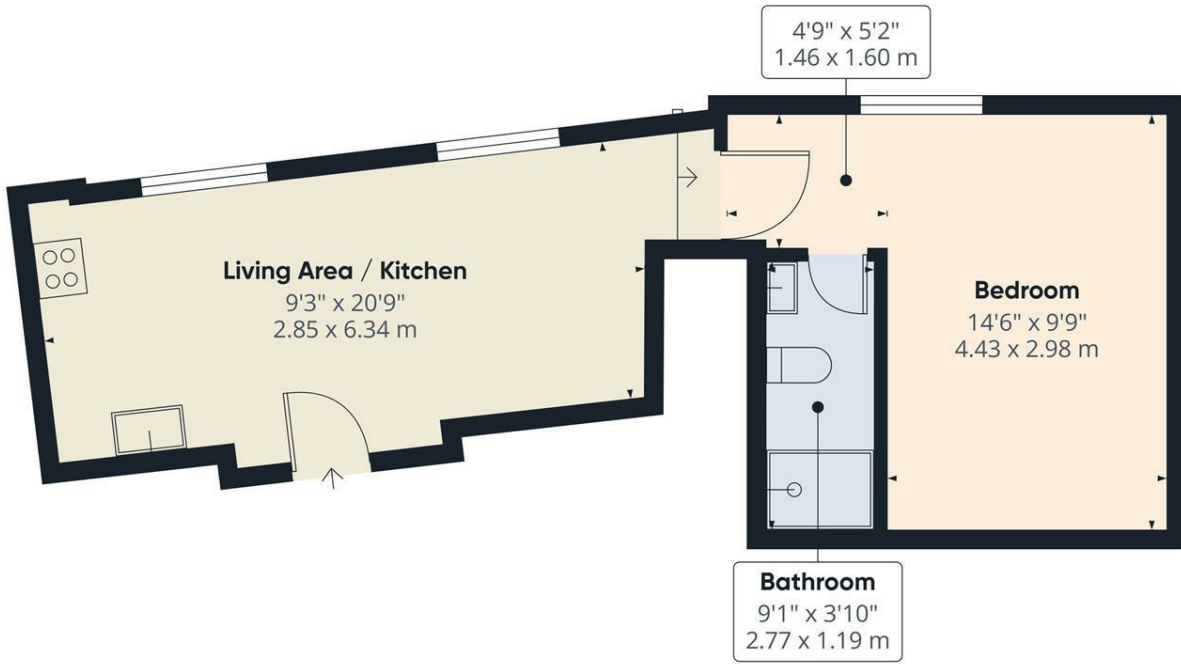
The accommodation briefly comprises: a welcoming entrance hallway with cloakroom storage, a generous double bedroom, a sleek and contemporary shower room, and a stunning open plan kitchen/living area brimming with charm, thanks to its striking period features.

Externally, the property benefits from a dedicated parking space and access to landscaped communal grounds.

Positioned in Sheffield's vibrant creative quarter, Cornish Place places you at the centre of Kelham Island life. Just a short walk from the city centre and moments from a tram stop, you'll enjoy easy access to everything from independent cafés and award-winning eateries to the renowned Kelham Island Museum.

Photographs are representative of the property type and may vary from the actual property available.

Unfurnished. Energy Efficiency Rating C - Council Tax Band - B

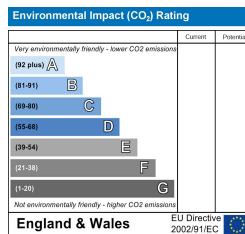
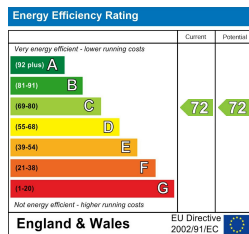


Approximate total area^m
405 ft²
37.6 m²

(1) Excluding balconies and terraces

Calculations reference the RICS IPMS 3C standard. Measurements are approximate and not to scale. This floor plan is intended for illustration only.

GIRAFFE360



Banner Cross
Hathersage
Bakewell
Matlock
www.saxtonmee.co.uk

949-951 Ecclesall Road, Sheffield S11 8TN
3 Bank View, Main Road, Hathersage S32 1BB
Matlock Street, Bakewell DE45 1EE
27 Causeway Lane, Matlock, DE4 3AR

T: 0114 268 3241
T: 01433 650009
T: 01629 815307
T: 01629 828250

E: bannercross@saxtonmee.co.uk
E: hathersage@saxtonmee.co.uk
E: bakewell@saxtonmee.co.uk
E: matlock@saxtonmee.co.uk